

Pressure Switches

Low Pressure Switch



Measuring critical system parameters is essential

Reliable and continuous control of the filter in all applications

The Low Pressure range of filter condition indicators are designed for use on a wide range of Parker filters and competitive interchange filters. A comprehensive range of high quality indicators for mobile, industrial and marine applications.

Ideal for giving accurate electrical feedback of filter clogging condition in order to facilitate effective maintenance and ensuring hydraulic systems, marine/mobile or industrial are protected from particulate contamination.



Contact Information:

Parker Hannifin
Hydraulic & Fuel Filtration EMEA

European Product
Information Centre
Freephone: 00800 27 27 5374
(from AT, BE, CH, CZ, DE, EE, ES,
FI, FR, IE, IT, PT, SE, SK, UK)
filtrationinfo@parker.com

www.parker.com/hffe

Product Features:

- The Low Pressure range of filter condition indicators, designed for use on a wide range of Parker filters.
- Accurate electrical filter clogging feedback.

Applications.

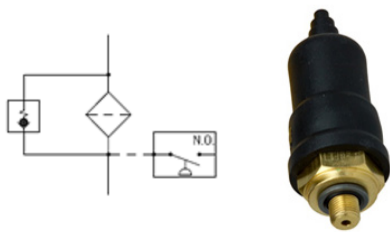
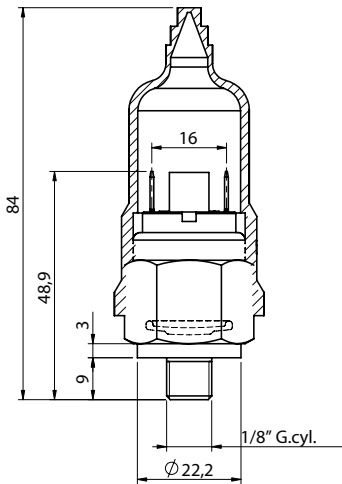
- Mobile, industrial and marine equipment



ENGINEERING YOUR SUCCESS.

Pressure Switches

Low Pressure Switch - LPS S1



Specification

LPS S1

Weight:

70 gram

Maximum working pressure:

40 bar

Connections:

Thread option G1/8.

Mounting Torque:

Max. 8Nm

Temperature:

up to 100°C

Electrical contact:

N.O. Normally open

Max Voltage:

48V

Max. switched current

0.5 A

Protection degree

IP00

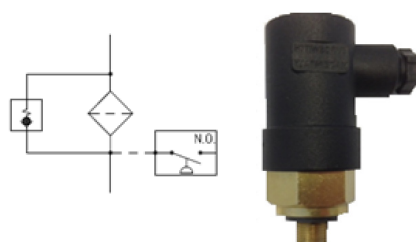
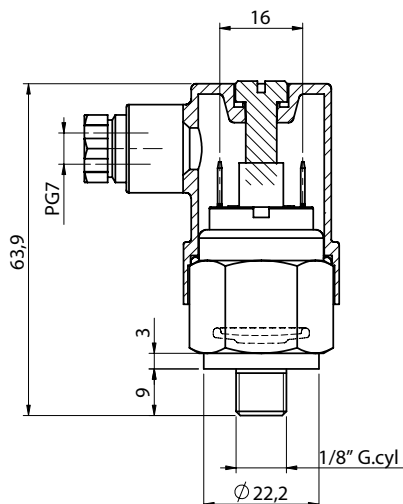
Protective cap:

Rubber IP54

For more information please see our preferred part number table below.

Parker S1 = 42 V Normally Open preferred part numbers

Part number	Box 1	Box 2	Box 3	Box 4	Box 5	Box 6	Box 7	Box 8
LPSS1EBG02MRP1	LPS	S1	E	B	G02	M	RP	1
LPSS1IBG02MRP1	LPS	S1	I	B	G02	M	RP	1



Specification

LPS S1 - with connector PG7

Weight:

140 gram

Maximum working pressure:

40 bar

Connections:

Thread option G1/8.

Mounting Torque:

Max. 8Nm

Temperature:

up to 100°C

Electrical contact:

N.O. Normally Open

Max Voltage:

48V

Max. switched current

0.5 A

Protection degree

IP00

Protective connector:

IP65

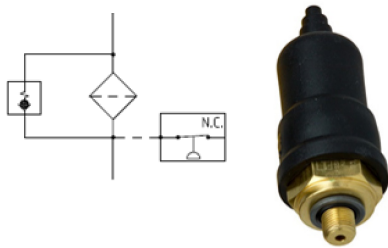
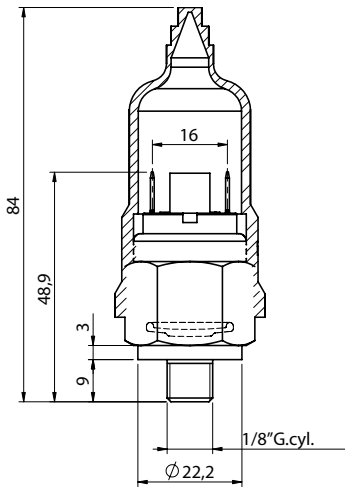
For more information please see our preferred part number table below.

Parker S1 with PG7

Part number	Box 1	Box 2	Box 3	Box 4	Box 5	Box 6	Box 7	Box 8
LPSS1EBG02MPP1	LPS	S1	E	B	G02	M	PP	1

Pressure Switches

Low Pressure Switch - LPS S2



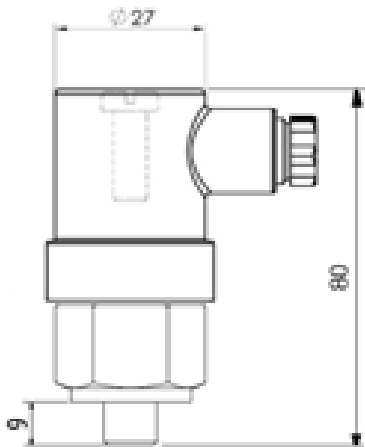
Specification

LPS S2
Weight: 70 gram
Maximum working pressure: 40 bar
Connections: Thread option G1/8
Mounting Torque: Max. 8Nm
Temperature: up to 100°C

Electrical contact: N.C. Normally Closed
Max Voltage: 48V
Max. switched current 0.5 A
Protection degree IP00
Protective cap: Rubber IP54

For more information please see our preferred part number table below.

Preferred Part Numbers (S2 = 42V Normally Closed N.C.):								
Part number	Box 1	Box 2	Box 3	Box 4	Box 5	Box 6	Box 7	Box 8
LPSS2EBG02MRP1	LPS	S2	E	B	G02	M	RP	1



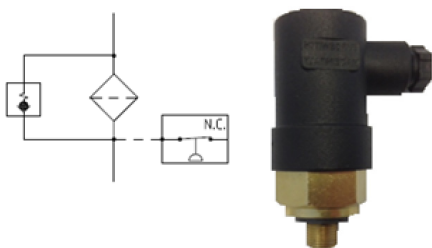
Specification

LPS S2 - with connector PG7
Weight: 140 gram
Maximum working pressure: 40 bar
Connections: Thread option G1/8.
Mounting Torque: Max. 8Nm
Temperature: up to 100°C

Electrical contact: N.C. Normally Closed
Max Voltage: 48V
Max. switched current 0.5 A
Protection degree IP00
Protective connector: IP65

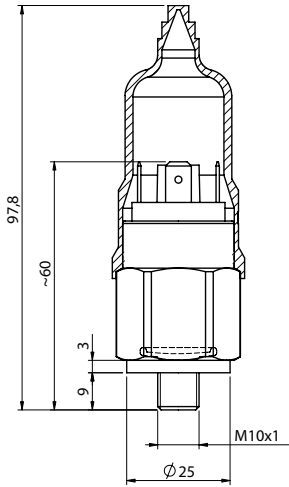
For more information please see our preferred part number table below.

Parker S2 with PG7								
Part number	Box 1	Box 2	Box 3	Box 4	Box 5	Box 6	Box 7	Box 8
LPSS2EBG02MPP1	LPS	S2	E	B	G02	M	PP	1



Pressure Switches

Low Pressure Switch - LPS S3

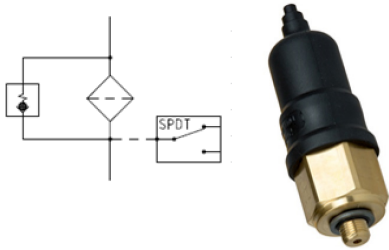


Specification

LPS S3
Weight: 115 gram
Maximum working pressure: 40 bar
Connections: Thread M10
Mounting Torque: Max. 8Nm
Temperature: up to 100°C

Electrical contact: Change over SPDT contacts
Max Voltage: 24Vdc/250 Vac
Max. switched current 2(1)A/6(1)A
Protection degree IP00
Protective cap: Rubber IP54

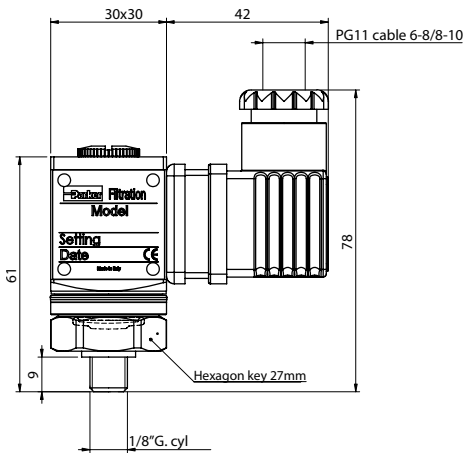
For more information please see our preferred part number table below.



Preferred Part Numbers (S3 = 42V Change Over):								
Part number	Box 1	Box 2	Box 3	Box 4	Box 5	Box 6	Box 7	Box 8
LPSS3HBM20MRP1	LPS	S3	H	B	M10	M	RP	1
LPSS3BBM10MRP1	LPS	S3	B	B	M10	M	RP	1
LPSS3EBM10MRP1	LPS	S3	E	B	M10	M	RP	1

Pressure Switches

Low Pressure Switch - LPS S6

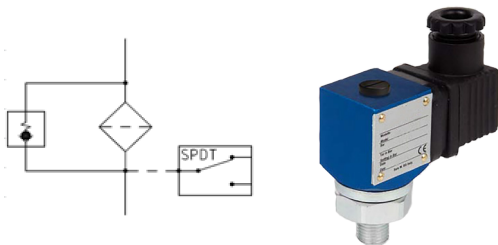


Specification

LPS S6
Weight: 190 gram
Maximum working pressure: 150 bar
Connections: Thread option G1/8.
Mounting Torque: Max. 8Nm
Temperature: up to 100°C

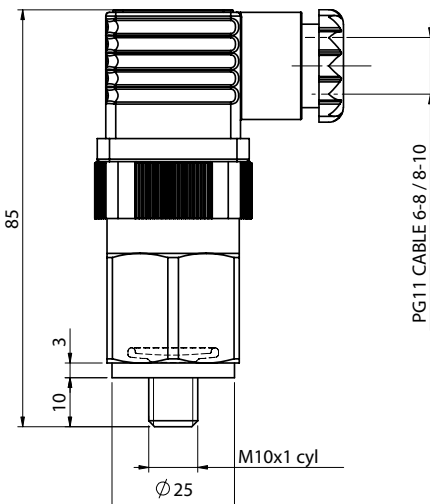
Electrical contact: Change over SPDT contacts
Max Voltage: 250V
Max. switched current: 5 (1) A
Protection degree: IP00
Protective connector: IP65

For more information please see our preferred part number table below.



Preferred Part Numbers (S6 = 250V Change Over):

Part number	Box 1	Box 2	Box 3	Box 4	Box 5	Box 6	Box 7	Box 8
LPSS6EBG02APCR1	LPS	S6	E	B	G02	A	PCR	1

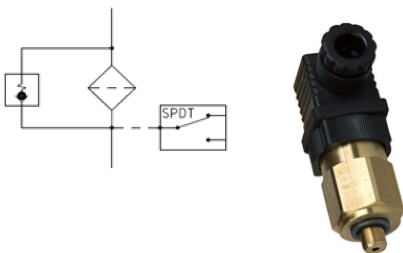


Specification

LPS S6
Weight: 140 gram
Maximum working pressure: 40 bar
Connections: Thread option M10 or G1/8.
Mounting Torque: Max. 8Nm
Temperature: up to 100°C

Electrical contact: Change over SPDT contacts
Max Voltage: 250Vac, 30Vdc
Max. switched current: 5 (1) A, 4 (3) A
Protection degree: IP00
Protective connector: IP65

For more information please see our preferred part number table below.



Preferred Part Numbers (S6 = 250V Change Over):

Part number	Box 1	Box 2	Box 3	Box 4	Box 5	Box 6	Box 7	Box 8
LPSS6EBM10MPC1	LPS	S6	E	B	M10	M	PC	1
LPSS6BBM10MPC1	LPS	S6	B	B	M10	M	PC	1

Pressure Switches

Low Pressure Switch

Features & Benefits

Features	Advantages	Benefits
Indicators fatigue test to full pressure rating	Reliable indicators for a wide range of applications	Reliable and continuous control of the filter in all applications
Screw-in type indicators	Easy mounting	Reliable sealing, no leakage
Several indication settings	Optimized for each bypass setting	Right indicator setting for application

Ordering Information

Box 1 LPS	Box 2 S3	Box 3 E	Box 4 B	Box 5 G02	Box 6 M	Box 7 RP	Box 8 1
---------------------	--------------------	-------------------	-------------------	---------------------	-------------------	--------------------	-------------------

Product configurator

Box 1

Code	
Indicator series	Code
Low Pressure Switch	LPS

Box 2

Filter type	
Electrical contacts	Code
Normally Open (NO) Max. 42 V.	S1
Normally Closed (NC) Max. 42 V.	S2
Electrical Change over (SPDT) Max. 40 V.	S3
Electrical Change over (SPDT) Max. 250 V.	S6

Box 3

Indicator setting	
Indicator setting	Code
0.7 bar (10 psi)	B
1.2 bar (17 psi)	E
1.5 bar (21 psi)	H
2.0 bar (29 psi)	I

Box 4

Seal type	
Seal material	Code
Buna/Nitrile	B
Fluorelastomer (Viton)	On request

Box 5

Thread connection	
Thread connection	Code
M10x1 Cylindrical	M10
G1/8 Cylindrical	G02

Box 6

Indicator body	
Indicator body	Code
Aluminium (Only LPSS6 + rotating system)	A
Brass	M

Box 7

Protection		
Protective cap and connectors	Protection degree	Code
Rubber Protective cap (Box 2: only S1-S3)	IP54	RP
Protective Connector PG7 (Box 2: only S1-S3)	IP65	PP
Protective Connector PG11 (Box 2: only S1-S3)	IP65	PC
Protective Connector PG11 Rotating 360° system (Box 2: only S6)	IP65	PCR
Deutsch Conn. DT04-2P (Box 2: only S1-S3)	IP67	D2
Connector AMP Junior timer (Box 2: only S1-S3)	IP67	JT

Box 8

Options	
Options	Code
Standard	1
Other options	factory supplied